

NAPLAN 2023

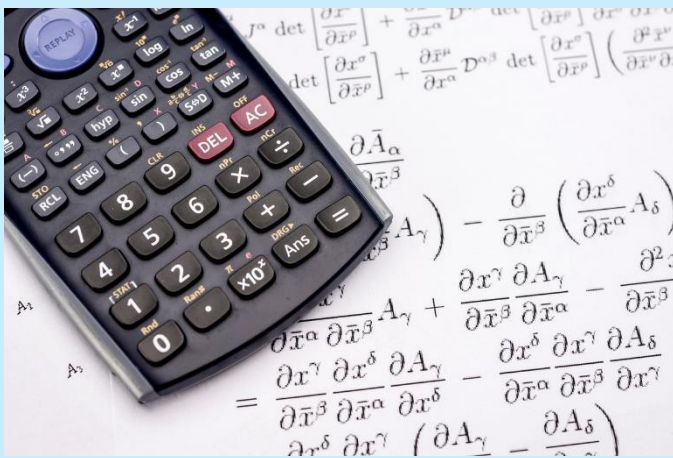
Information for students in Years 7 and 9

How can I get ready for NAPLAN?

Use the demonstration tests to practise the types of questions and tools available in the online tests.

Access the demonstration tests here:

<https://www.nap.edu.au/online-assessment/public-demonstration-site>

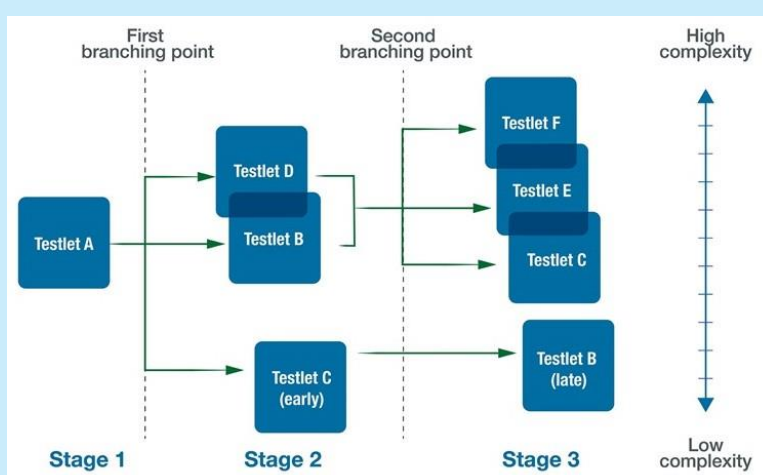
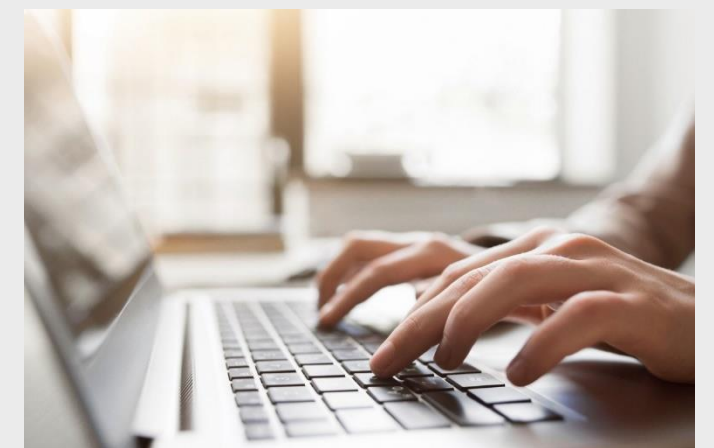


Can I use my own calculator for the numeracy test?

No. The online numeracy test will have an on-screen calculator. Try the NAPLAN online calculator in the numeracy demonstration tests on the public demonstration site.

Do I need to touch type?

No. You do not need to be able to touch type to complete the tests.



What is tailored testing?

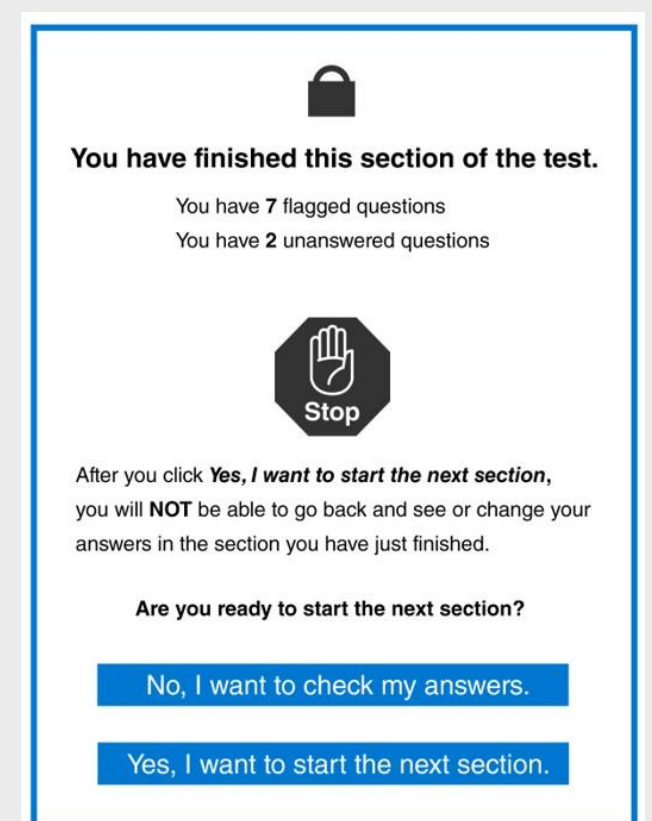
The test will change depending on your performance in the test. Questions get easier or harder based on your answers.

Conventions of language test important information

A message will appear on your device to let you know you have finished the spelling section of the test.

Check your answers before selecting '*Yes, I want to start the next section*'.

After you select '*Yes, I want to start the next section*', the grammar and punctuation section will start. You will **not** be able to go back to the spelling section of the test.



Questions? Speak with your teacher or visit www.nap.edu.au/online-assessment